

TM



DESIGNRANGE

DR32-35
**ASSEMBLY
INSTRUCTIONS**



TESTED PRODUCT



RECYCLABLE PRODUCT

www.inclusive-concepts.co.uk

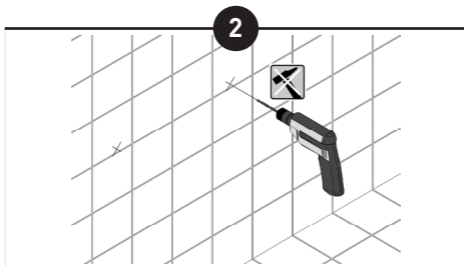
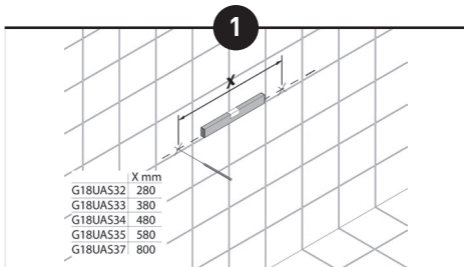
0845 200 7961

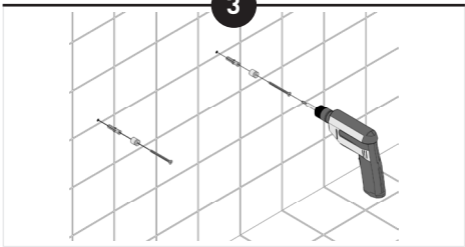
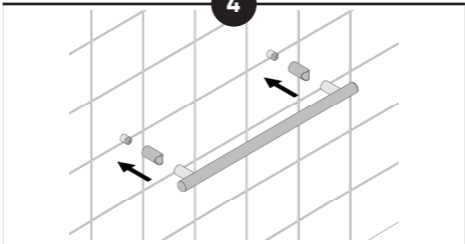
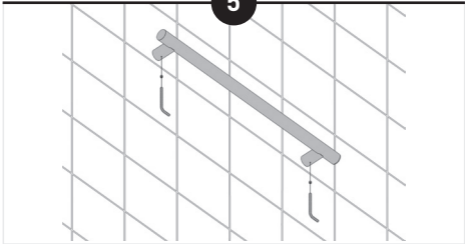
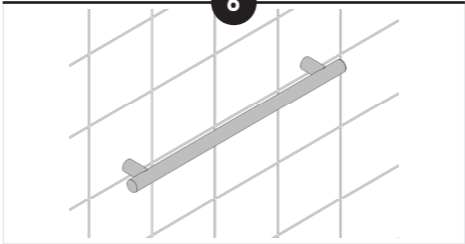
Code	Length	Net weight	Max load
DR32	380mm	0.749 Kg	150Kg
DR33	480mm	0.847 Kg	
DR34	580mm	0.973 Kg	
DR35	680mm	1.066 Kg	

PLEASE READ THIS MANUAL CAREFULLY

NOTE: The product must be installed by a qualified person. Screws and rawplugs NOT supplied.

STEP BY STEP INSTALLATION GUIDE:



3**4****5****6**

FIELD OF APPLICATION. The rail is a handle designed and constructed as a safety support for the sole purpose of facilitating use of the bathroom by elderly and/or disabled people. For correct use, the rails must be kept free from any objects and must be easily accessible. Room temperature -5°C $+40^{\circ}\text{C}$. The rail is for internal use only and colours could be affected by UV light.

SAFETY, PRECAUTIONS. The rail must be installed by qualified personnel, who must choose the most adequate fixings for the various walls. The installers must ensure that the wall surface in the area of the fixing flange is perfectly flat, without joints or protruding tiles, that the wall structure is suitable for fixing the device, and that there are no weak points, underlying electric wiring or water supply pipes. Three wall plugs must be used for fixing the flange. The lack or inefficiency of one or more wall plugs seriously reduces the load-bearing capacity and does not guarantee tight fixing. After installation simulate one or more usage tests. Inclusive Concepts shall not be held responsible for improper installation of the rail.

MAINTENANCE. Periodically check the rails stability.

CLEANING. Use a damp cloth wetted with neutral liquid soap and/or other sanitising product. Do not use abrasive liquid detergents containing chlorine, strong acids or bases, concentrated solvents, such as acetone and trichloroethylene and derivatives, which do not improve the sanitising action, and may cause the materials to dull and deteriorate. Do not use warm air sources for drying.

DISPOSAL. The user is responsible for disposal, which must be carried out in compliance with the laws of the country of installation. The rails are not manufactured using substances that are harmful or hazardous to human health and the environment, and all their components are recyclable and/or reusable. The rail is manufactured from materials suitable for recycling.